

abbotFox



Near Wymondham College, NR17
£475,000

“

We are a team of genuine individuals who hold a deep passion for both property and marketing. Collectively, we bring over 70 years of experience in the property market of Norfolk and Suffolk. Our affection for both counties runs deep, and we are enthusiastic about sharing our passion with you.

Colin McKenzie | **Branch Partner**







THE DETAIL _____

abbotFox presents Chaslin, a stylish, design-led home offering flexible family living with contemporary finishes and a peaceful setting close to Wymondham College.

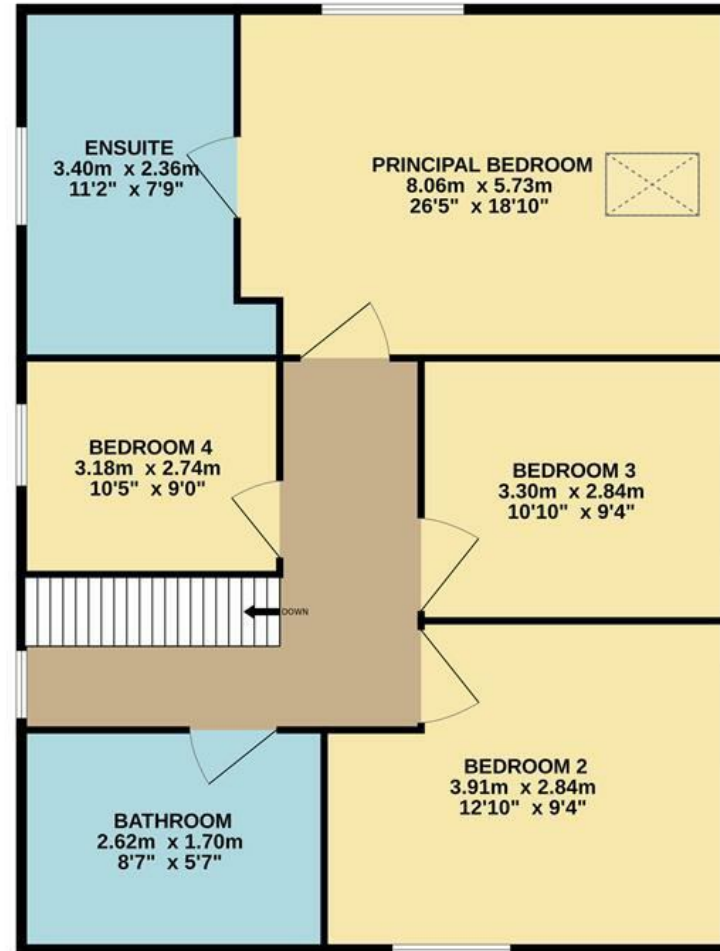
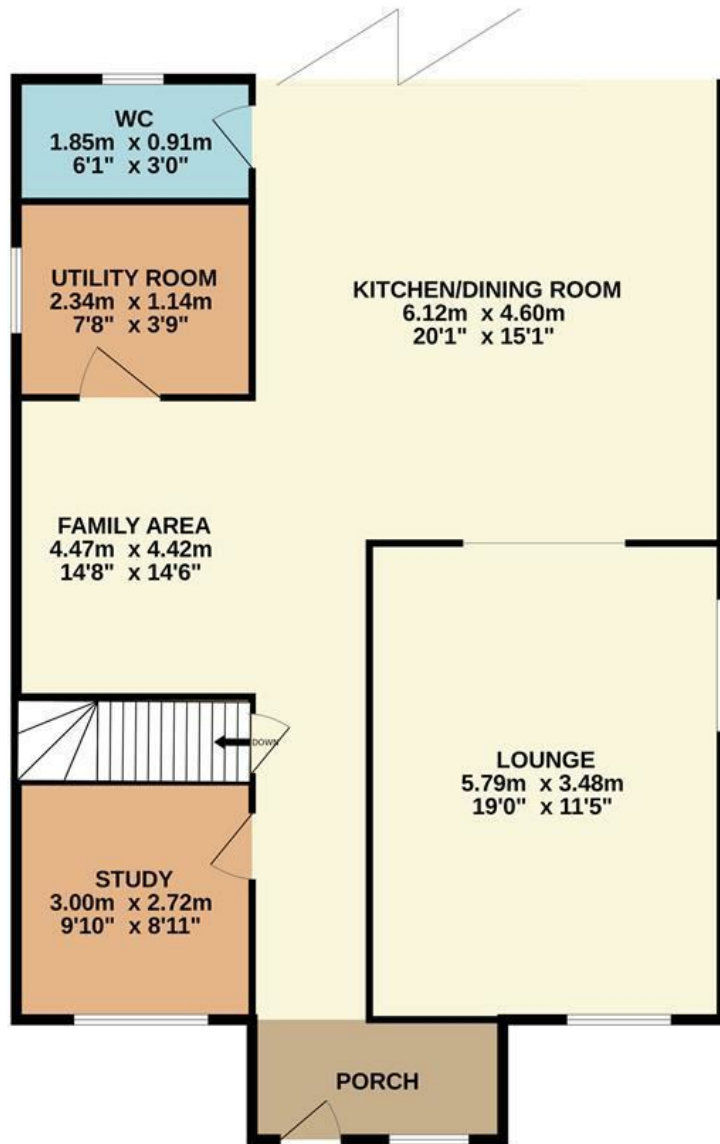






THE HIGHLIGHTS _____

- A contemporary design led home
- Close to and within catchment for Wymondham College
- Four/five bedrooms
- Open planing kitchen family room
- Separate sitting room
- High specification kitchen and bathrooms
- Fifth bedroom/study
- No onward chain
- South facing garden
- PART EXCHANGE CONSIDERED



Whilst every attempt has been made to ensure the accuracy of the floorplan contained here, measurements

Let's talk

01603 660000

sales@abbotfox.co.uk

@abbotfox

EPC RATING -

Disclaimer – In accordance with the Property Misdescriptions Act, the company abbotFox gives notice that all descriptions, references to condition, necessary permissions for use and other details are given in good faith and believed to be correct, but any purchaser should not rely on them as statements of fact, and must satisfy themselves by inspection or other means, as to their accuracy.